

MAIN SPECIFICATIONS

| Model | | 8FG10 8FD10 | 8FG15 8FD15 | 8FG18* 8FD18* | 8FGK20* 8FDK20* | 8FG20 8FD20 | 8FGK25* 8FDK25* | 8FG25 8FD25 | 8FGK30* 8FDK30* | 8FG30 8FD30 | 8FGJ35 8FDJ35 |
|-------------------------|------|----------------|----------------|------------------|--------------------|----------------|--------------------|----------------|--------------------|----------------|------------------|
| Engine Model | | 4Y 1DZ- | 4Y 1DZ- | 4Y 1DZ- | 4Y 1DZ- | 4Y 1DZ- ,2Z | 4Y 1DZ- | 4Y 1DZ- ,2Z | 4Y 1DZ- | 4Y 1DZ- ,2Z | 4Y 2Z |
| Load Capacity | kg | 1,000 | 1,500 | 1,750 | 2,000 | 2,000 | 2,500 | 2,500 | 3,000 | 3,000 | 3,500 |
| Load Center | mm | 500 | 500 | 500 | 500 | 500 | 500 | 500 | 500 | 500 | 500 |
| Overall Width | A mm | 1,045 | 1,070 | 1,070 | 1,155 | 1,150 | 1,155 | 1,150 | 1,255 | 1,240 | 1,290 |
| Turning Radius(outside) | B mm | 1,910 | 1,990 | 2,010 | 2,040 | 2,200 | 2,090 | 2,280 | 2,130 | 2,430 | 2,490 |
| Overhead Guard Height | C mm | 2,080 | 2,080 | 2,080 | 2,085 | 2,110 | 2,085 | 2,110 | 2,085 | 2,170 | 2,180 |
| Length to Fork Face | D mm | 2,240 | 2,290 | 2,310 | 2,380 | 2,560 | 2,445 | 2,635 | 2,520 | 2,795 | 2,865 |

NOTE: *Powershift models

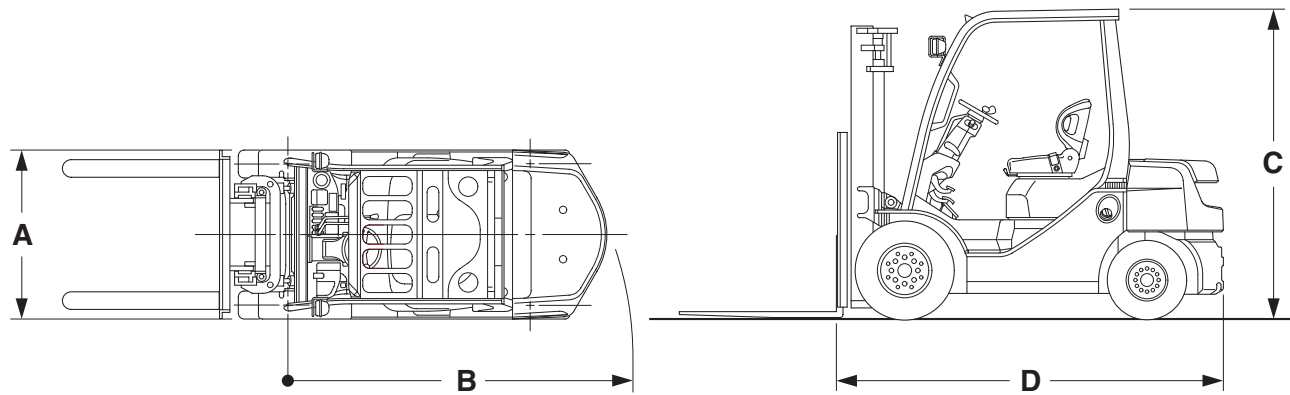
ENGINE SPECIFICATIONS

| Model | | TOYOTA 4Y Gasoline |
|-------------------------|-----|------------------------|
| Piston Displacement | cc | 2,237 |
| Rated Horsepower/r.p.m. | kW | 40/2,400 (43/2,600) |
| Rated Torque/r.p.m. | N-m | 161/1,800 |

NOTE: () for 30(32)-8FG30.8FGJ35

| Model | | TOYOTA 1DZ-II Diesel | TOYOTA 2Z Diesel |
|-------------------------|-----|-------------------------|---------------------|
| Piston Displacement | cc | 2,486 | 3,469 |
| Rated Horsepower/r.p.m. | kW | 40/2,400 [44/2,600] | 49/2,200 |
| Rated Torque/r.p.m. | N-m | 166/1,600 | 215/1,600 |

NOTE: [] for 60(62)-8FD20.25.30



The data in this brochure is determined based on our standard testing condition. The performance may vary depending on the actual specification and condition of the vehicle as well as the condition of the operating area. Availability and specifications depend on region and are subject to change without notice. Due to photography and printing, color of the actual vehicle may vary from this brochure.

This brochure is printed on recycled paper with soy ink. SOYINK



TOYOTA Material Handling Company
A Division of TOYOTA INDUSTRIES CORPORATION

CAT.8FG/8FD10-35(Digest)/E-0610/©/Printed in Japan/No.711220E0/5,000

TOYOTA
8
SERIES

ENGINE POWERED FORKLIFT
8FG/8FD 1.0 to 3.5 ton



The Mastery of True Potential

Kiwameru [究], a Japanese word meaning “mastery”. Mastery of any undertaking can only be achieved if there is true potential and unwavering dedication to excellence. To Toyota, the 8 Series is the proud culmination of 50 years in the pursuit of mastery in the development and manufacture of forklifts.

All who experience the level of mastery in the 8 Series will be inspired to reach for higher goals.

The spacious operator’s compartment designed for clear visibility and comfort, combined with low noise operation, enhances operator performance.

Allow the mastery found in the 8 Series to develop the true potential of your workplace.



Features and equipment may vary depending on market.



Speedometer

Multifunction Display OPT

Functions such as a digital speedometer, odometer and planned maintenance hour warning indicator are included in this display.

Travel and Load-Handling Control OPT

This includes idle-control to maintain lifting performance and one-button control to lower maximum speed. Powershift models also control speed based on load weight and height.



Ample Seat Adjustment

The operator’s seat can be adjusted forward and backward to accommodate most operator sizes. The amount of adjustment is 25% more than on the current model.

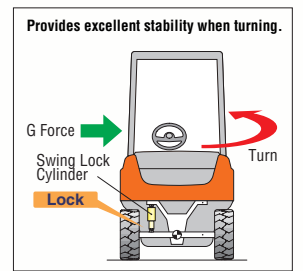


Operator Presence Sensing System (OPS)

The OPS system will terminate load-handling and powered travel functions if it senses that the operator is not in the proper operating position.

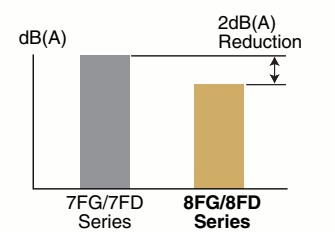
System of Active Stability (SAS) OPT

The Active Control Rear Stabilizer realizes forklift stability during turns. This system includes such functions as the Mast Function Controller and Steering Synchronizer.



Workplace-Friendly Design

Low-noise operation and environmentally friendly components help to create comfortable workplace. Operating noise has been lowered by 2 dB(A), improving conditions for the operator and those working near the forklift.



Clear Visibility

The operator will enjoy a clear view of the fork tips thanks to the well-considered design of the instrument panel and the overhead guard.

Operator-Friendly Steering Wheel

The small-diameter steering wheel helps easy operation.



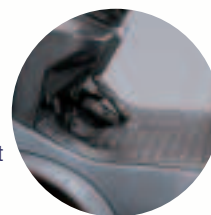
Large Assist Grip

The easy-to-grasp assist grip makes entering and exiting easier.



Roomy Foot Space

Plenty of foot space enables easier entry and exit and makes the forklift more comfortable to operate.



Activate



Release

Foot-Activated Parking Brake

The operator simply depresses the parking brake pedal without changing operating position. The release lever is also in an easy-to-use location. (Powershift transmission models only.)



Serviceability

Extended engine hood opening provides easy access for inspections and servicing.